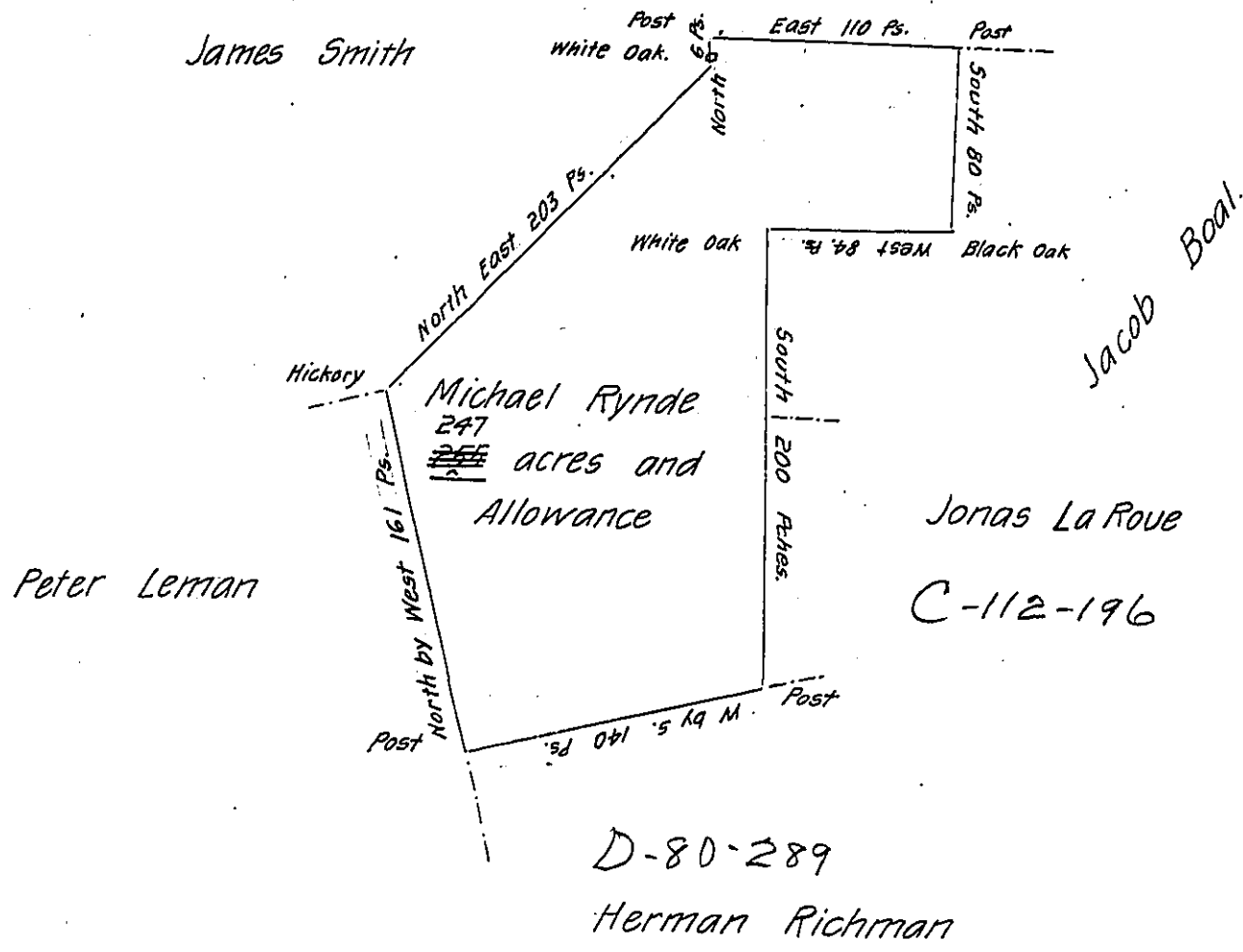


A-69 186



D-80-289

Herman Richman

In Pursuance of a Warrant from the Proprietaries dated the 3^d day of January 1733 Surveyed to Michael Rynde on the 10th of April 1735 the above described tract of Land Situate on a branch of Mill Creek in the County of Lancaster Containing two hundred & ~~forty~~ ^{forty} ~~seven~~ ^{seven} ~~five~~ acres and the allowance of Six P. Cent

Jn^o Taylor —

IN TESTIMONY that the above is a copy of the original remaining on file in the Department of Internal Affairs of Pennsylvania, made conformably to an Act of Assembly approved the 16th day of February, 1833, I have hereunto set my Hand and caused the Seal of said Department to be affixed at Harrisburg, this eighth day of August 1906

George D. Brown
Secretary of Internal Affairs.